

The NOMA, 50 West 30th Street

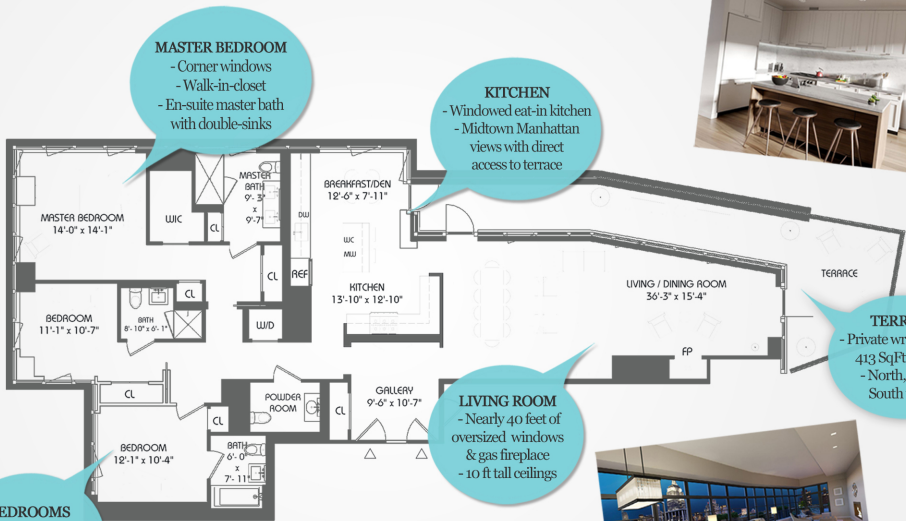
Penthouse 2

2,190 Sq.Ft

413 Sq. Ft Terrace

3 Bedrooms

3.5 Bathrooms



MASTER BEDROOM
- Corner windows
- Walk-in-closet
- En-suite master bath with double-sinks

KITCHEN
- Windowed eat-in kitchen
- Midtown Manhattan views with direct access to terrace

TERRACE
- Private wrap-around 413 Sq.Ft. terrace
- North, East & South views

BEDROOMS
- Both feature en-suite bathrooms with crafted oak vanities

LIVING ROOM
- Nearly 40 feet of oversized windows & gas fireplace
- 10 ft tall ceilings

